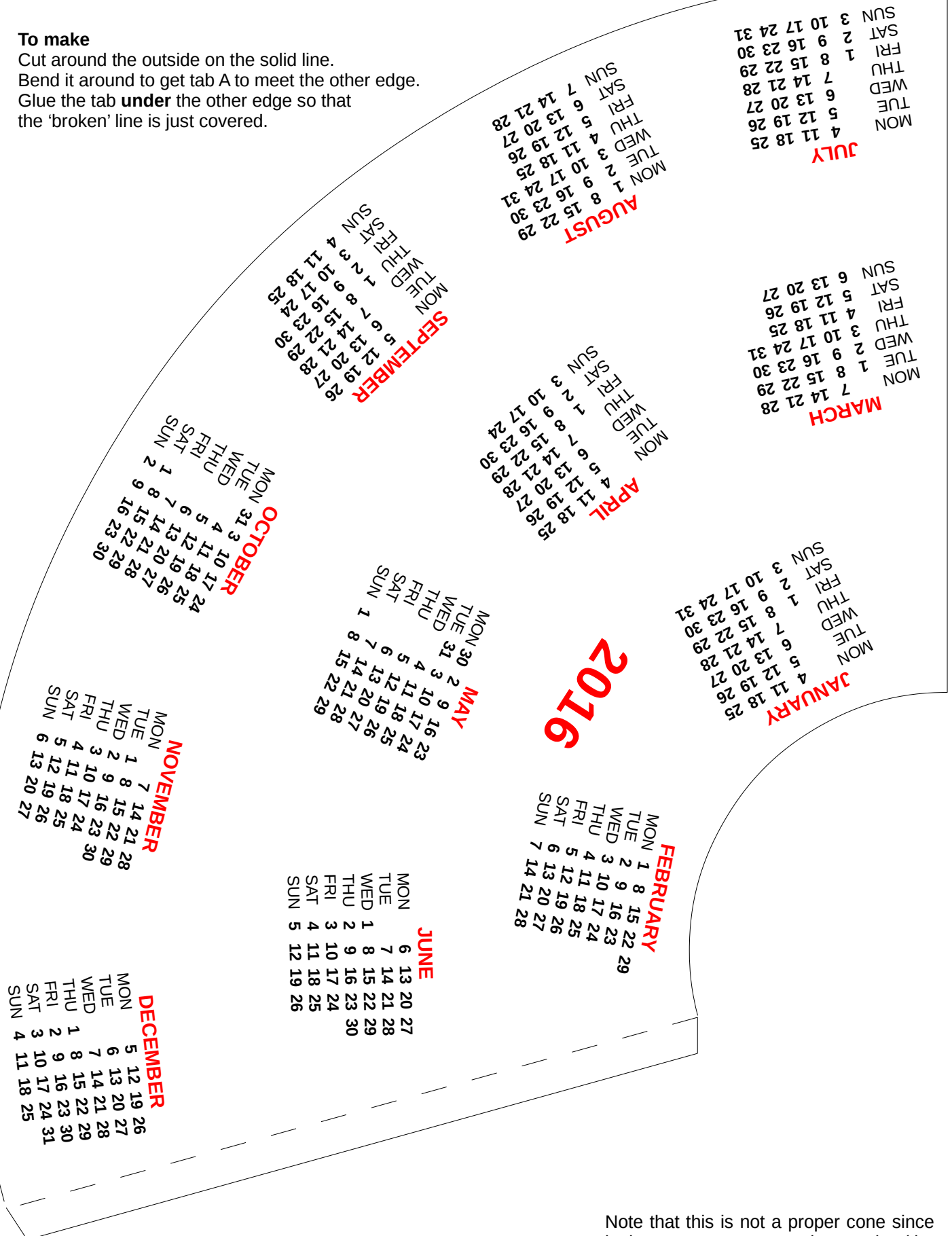


Cone 2016

To make

Cut around the outside on the solid line.
Bend it around to get tab A to meet the other edge.
Glue the tab **under** the other edge so that the 'broken' line is just covered.



Note that this is not a proper cone since it does not come to a sharp point (the apex). The top has been cut off so that it is simpler to make and also to handle when it is in use.
More correctly it is a **truncated cone**.